

Wolfgang Amadeus Mozart
The Marriage of Figaro: Overture

Violoncello Fragment 1

Presto

pp

1 2 3 4 5 6 7

8 9

p

1 2 3 4 5 6

7 8 9

f p f p f p f

1 2 3 4 5 6 A 7

p

6 1 1 1

Fragment 2

83

93 B 1 1 1

p

103 1 2 3 4 5

115 1 2 3 4 5 1 1 1

f f f f

129 1 C 3

1

Violoncello

(1. und 2. Fassung)

W. A. MOZART

Sinfonie in g/G minor

KV 550

BIBLIOTEKA NUTOWA
Filharmonii Zielonogorskiej
im. Tadeusza Bairda
pl. Powstańców Wielkopolskich 10
65-075 Zielona Góra

111

118

123

129

134

190

195

201

208

214

220

229

241

250

258

Viol. I

cresc.

p

sf

f

G.P.

1

Violoncello

(1. und 2. Fassung)

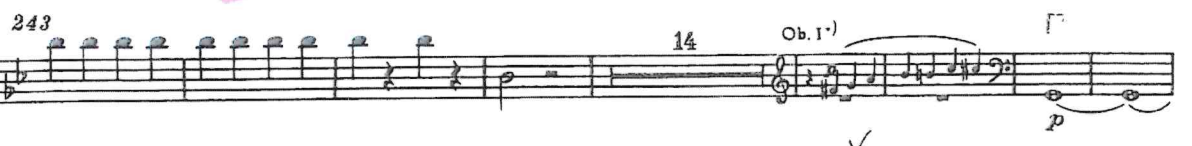
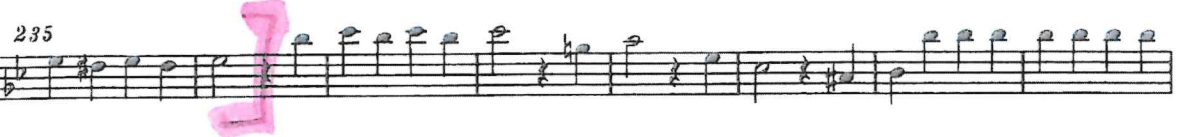
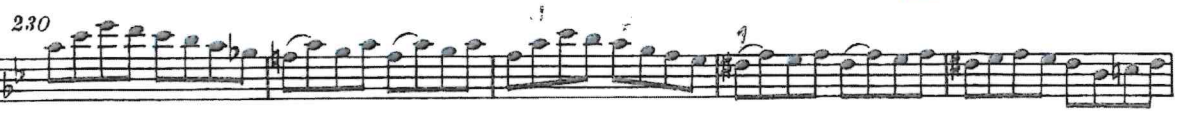
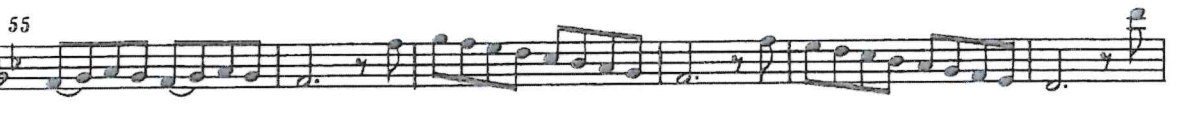
W. A. MOZART

Sinfonie in g/G minor

KV 550

BIBLIOTEKA NUTOWA
Filharmonii Zielonogorskiej
im. Tadeusza Bairda
pl. Powstańców Wielkopolskich 10
65-075 Zielona Góra

02. IV
42



17 II

9.

Beethoven — Symphony No. 5

4

Violoncello e Basso

Andante con moto $\text{♩} = 120$

Violoncello e Basso

Viollo

p dolce pizz.

arco

Viol. I

unia.

f *p* *cresc. f* *p* *f* *p*

Viol. I

pizz. *arco*

ff *sempre ff*

Viollo

sf *f* *pp* *sempre p* *cresc.*

Viollo

p dolce pizz.

Cb.

f *p* *f*

Viollo

unia.

Cb.

arco *cresc. f* *p* *cresc. f* *p* *f* *p*

Viollo

pizz.

Cb.

pizz. *arco*

ff *arco*

Viollo

unia.

Viollo

pp

Viollo

f *ff* *p dolce pizz.*

cc II no.

2

Beethoven — Symphony No. 5

Violoncello e Basso

6

102

pp

pp

107

pizz.

arco

pp

114

arco

118

arco

pp

124

1 2 3 4 5 6 7 8 9

sempre pp

f

p

Fl. I

144

Coro

ff

156

pizz.

dimin.

p

arco

pp

Viola

Vello

168

unis.

pizz.

Viol. I

trinc.

176

Viol. I

arco

pp

cresc.

ff

186

190

f

3

BEETHOVEN

Symphonie Nr. 5 in c

Symphony No. 5 in C minor

12. III
op. 67

Allegro

pp

poco ritard. a tempo

un/poco ritard. a tempo

f

pp

sf

42

poco ritard. a tempo

sf

dimin. pp

pp

56

70

f

cresc.

Detailed description: This image shows a page of musical notation for the first movement of Beethoven's Symphony No. 5 in C minor. The score is written in bass clef with a 3/4 time signature. It consists of five staves of music, with measure numbers 15, 27, 42, 56, and 70 marked at the beginning of their respective staves. The tempo is marked 'Allegro'. The dynamics range from pianissimo (pp) to fortissimo (f). Performance instructions include 'poco ritard. a tempo' and 'un/poco ritard. a tempo'. There are several accents (v) and sforzando (sf) markings. A pink bracket highlights the first staff, and a pink bracket highlights the fifth staff.

Beethoven — Symphony No. 5

2

Violoncello e Basso

III col

137 unis. *p*

147

158 1. 2. *f*

166

175 *bb* *f* *bb* 1 2 3 4 5 6

188 *Vollo* 2 *Cb.* *f* **B**

198 unis. *dimin.* *p*

207 *sempre più p* 8

Violoncello

Symphonie Nr. 9

d-moll · D minor
op. 125

Presto $\text{♩} = 66$



f Selon le caractère d'un Recitativ mais, in tempo. *dimin.*



p *f*

Allegro ma non troppo $\text{♩} = 88$



pp *f* *ff* Tempo I



dimin. *p* Tempo I arco
ritard. poco adagio Vivace pizz.



f



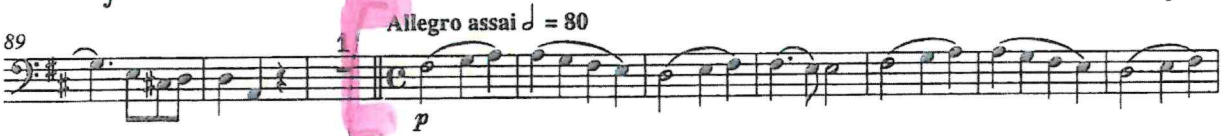
dimin. *p* Adagio cantabile Tempo I
Fag. I



cresc. *ff* *f* Allegro assai $\text{♩} = 80$



f *sf* Tempo I



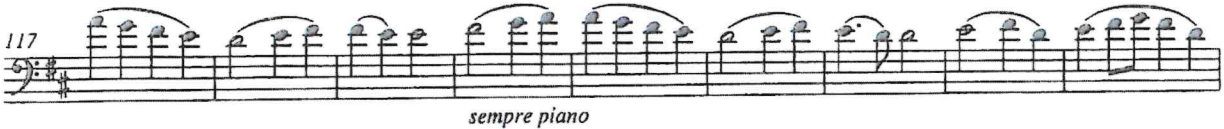
p Allegro assai $\text{♩} = 80$



cresc. *p*



cresc. *p*



sempre piano

Violoncello


Symphonie Nr. 9

d-moll · D minor

op. 125

2

126 
cresc. . . p

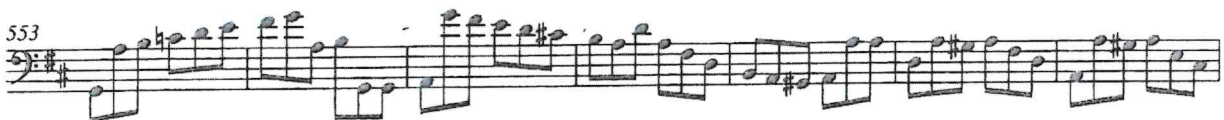
135 
cresc. . . . p

144 
cresc. . . p

153 

162 
f pp cresc. . . ff

546 

553 

560 
ff

567 

574 

581 
ff

588 
sf sf

Andante maestoso $\text{♩} = 72$

595 
ff sf sf sf

Symphony No.6 "Pathetique" Op.74

Written feb.-march 1893. First perf. 28. October 1893 in St. Petersburg Russian Musical Society
Pyotr Tchaikovsky Conductor

Pyotr Tchaikovsky
(1840-1893)

2. Allegro con grazia ♩ = 144

mf

mf

f

5

ff

9

mf

sempre mf

14

1. 2.

18

mf

piu f

22

mf

f

Violoncello

Symphonie Nr. 6

h-moll
„Pathétique“

III

Biblioteka Muzyki i Teatru
im. Juliusza Barda
pl. Powstańców Wielkopolskich 10
65-075 Zielona Góra

Piotr Iljitsch Tschaikowsky op. 74

Violoncello

66 *f*

69 *ff* *mf* *pp* **H**

73 *sempre pp*

76 *p* *p* *mf*

80 *f* *pp* **I**

83 *un poco cresc.*

86 *mf*

89 *f* *cresc.* *ff* **K**

95 *ff* *pizz.* *mf*

101 *ff arco* *p* *mf* *ff arco* *pizz.*

107 *mf* *ff arco* *pp* **L**

113 *pp* **M**

116 *sempre pp* *p*

Symphonie Nr. 2

D-dur

Violoncello

Johannes Brahms op. 73

II

Adagio non troppo

poco f espressivo

5

10

15

p

dim.

poco f

dim.

p

Brahms — Symphony No. 3 in F Major

'Cello

8

Poco Allegretto
mezza voce

espress.

A
dolce

dim. *dolce*

B
p legg.

C
pizz. *p* *arco* *p*

D

pp espress. *cresc.*

Detailed description of the musical score: The score is for the Cello part of Brahms' Symphony No. 3 in F Major, measures 8 to 67. It begins with a tempo marking of 'Poco Allegretto' and a dynamic of 'mezza voce'. The first system (measures 8-14) features a melodic line with a '5' fingering and an 'espress.' marking. The second system (measures 14-23) is marked 'dolce' and contains a section labeled 'A'. The third system (measures 23-30) continues the 'dolce' section, with a 'dim.' marking. The fourth system (measures 30-35) shows a melodic line with triplets and a '1' fingering. The fifth system (measures 35-43) is marked 'p legg.' and contains a section labeled 'B'. The sixth system (measures 43-54) is marked 'pizz.' and 'p', and contains a section labeled 'C'. The seventh system (measures 54-59) is marked 'dolce' and contains a section labeled 'D'. The eighth system (measures 59-67) is marked 'pp espress.' and 'cresc.', ending with a fermata.